

# Gifu University and Tottori University Joint Graduate School of Veterinary Sciences, Joint Major of Veterinary Sciences

<https://vetsci.gt-jdvm.jp/en>

## Entrance Exam Information

Selection of enrollees : Twice a year\*  
Enrollment month : April and October  
Number of applicants : 6

Please refer to the Student Application Guidelines (available also on website).

[https://www.gifu-u.ac.jp/admission/g\\_applicant/guide.html](https://www.gifu-u.ac.jp/admission/g_applicant/guide.html)

## Test Guide

Please follow the directions on Student Application Guidelines and submit the necessary documents to the address below by the due date.

## Contact

1-1 Yanagita, Gifu City, Gifu 501-1193  
Applied Biological Sciences Joint Veterinary Science,  
Gifu University  
TEL.+81-58-293-2987 FAX.+81-58-293-2992  
E-mail [renju@gifu-u.ac.jp](mailto:renju@gifu-u.ac.jp)

## Entrance Exam Information

Selection of enrollees : Twice a year\*  
Enrollment month : April and October  
Number of applicants : 5

Please refer to the Student Application Guidelines (available also on website).

<http://www.admissions.adm.tottori-u.ac.jp/graduate>

## Test Guide

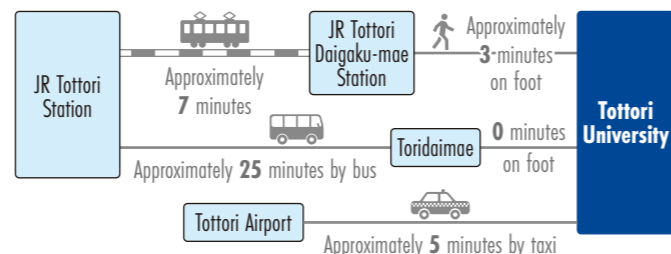
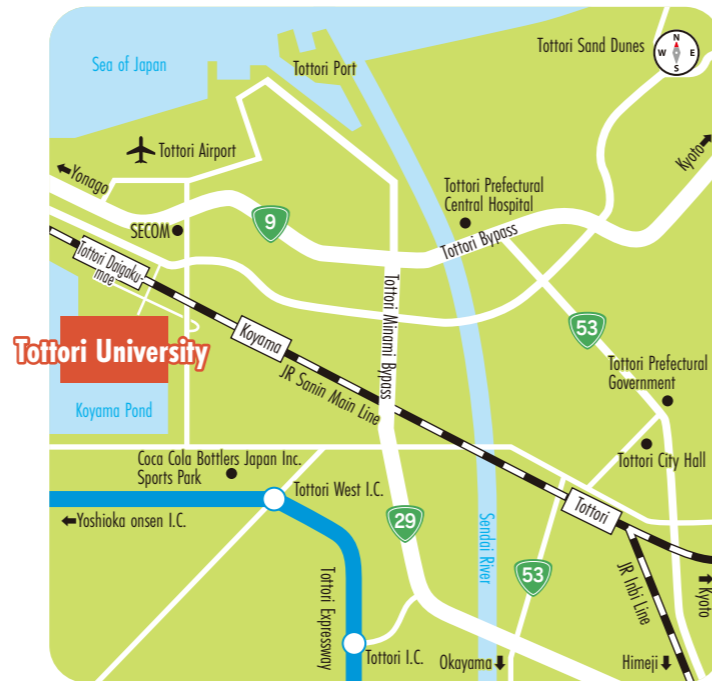
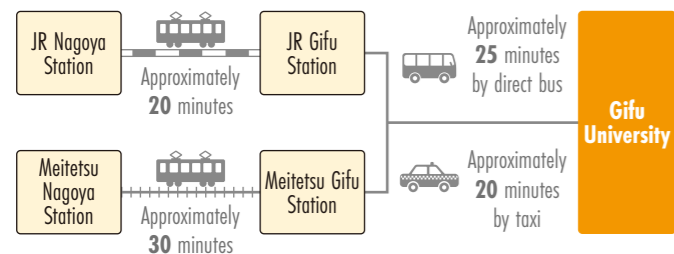
Please follow the directions on Student Application Guidelines and submit necessary documents to the address below by the due date.

## Contact

4-101 Koyamacho-minami, Tottori City, Tottori 680-8553  
Tottori University Joint Department of Veterinary Sciences,  
Department of Agricultural Science  
TEL.+81-857-31-5365 FAX.+81-857-31-5347  
E-mail [ag-kyoudouj@adm.tottori-u.ac.jp](mailto:ag-kyoudouj@adm.tottori-u.ac.jp)

\* The second enrollment period may not be available depending on the status of the first enrollment. Please contact each university for the availability of the second enrollment period.

## ACCESS



1-1 Yanagita, Gifu City, Gifu 501-1193  
TEL.+81-58-230-1111 <https://www.gifu-u.ac.jp/en/>



4-101 Koyamacho-minami, Tottori City, Tottori 680-8550  
TEL.+81-857-31-5007 <https://www.tottori-u.ac.jp/English/>

# Gifu University and Tottori University Joint Graduate School of Veterinary Sciences, Joint Major of Veterinary Sciences

Doctoral Program

We train **specialists** with a high level of expertise and international awareness.

Established in 2019

# We train specialists with a high level of expertise and international awareness.

## Overview of the Graduate School

This Graduate School promotes advanced research in a wide range of fields on animal and human health including the health of the ecosystem, as well as training veterinary science educators and researchers, who can contribute to advanced veterinary science. We also have the philosophy of education research to train veterinary science specialists with advanced knowledge and technology, and expertise and ethics, who can take a leading role in international and regional societies. With this philosophy, we are aiming to contribute to maintaining and developing a prosperous society by producing advanced veterinary science specialists who have acquired both academic and practical skills in these fields as Animal hygiene and public health specialists, One Health(\*) specialists, or Treatment of intractable diseases and drug discovery specialists.

\* The concept of integrating people, animals, and the environment to view health on a global scale

## Target human resources to be trained (Diploma policy)

- 1 Human resources who have advanced expertise and research skills in veterinary and animal sciences.
- 2 Human resources who can act as local leaders who respond to social demands by exercising creative research and communication skills based on a wide interdisciplinary background and a global viewpoint.
- 3 Human resources who can deal with or resolve various issues in veterinary and animal sciences as specialists in veterinary hygiene, public health, in One Health or in intractable disease treatment/drug discovery and development.



## Flow of degree acquisition

In this Graduate School, 1 principal supervisor and 2 vice-advisors (one being a faculty member of the other university), making a total of 3 faculty members, will be teaching, and students may use the facilities of both universities. The requirement for a "doctoral degree (veterinary medicine)" is to earn at least 30 credits (10 credits or more in courses offered by the other university) from the education curriculum of the Graduate School, and undertake the necessary research training; followed by doctoral degree thesis review, and to pass the final exam on the thesis detail and field of expertise. Those who have completed the course of the Graduate School will be granted a doctoral degree (veterinary science) under the names of Gifu University and Tottori University.

## "Overview of courses in education curriculum"

**Alumni of Joint Department of Veterinary Sciences**  
Training for specialists on overall living organisms who can contribute to the promotion of animal health, improvement of public health, and the maintaining of health in human society and the environment.

**Alumni of other university**

**Business people**

**International students**

## Characteristics of the Graduate School

Faculty from Gifu and Tottori Universities will participate in education and research for their students through daily communication, through the use of teacher mobility, student mobility, and distance learning systems, to establish effective guidance for training veterinary science educators and researchers.



## From generalist to specialist

~ Training for specialists in 3 advanced veterinary fields ~

This Graduate School will include training for advanced veterinary science specialists based on general veterinary science undergraduates. In addition to education for researchers, in order to train resources to become regional leaders, taking advantage of the characteristics of both universities (Animal hospital and Research Center for Wildlife Management, etc. at Gifu University; University Veterinary Medical Center, Avian Zoonosis Research Center, etc. at Tottori University) and past research achievements, the following 3 specialists trainings has been established to build an education curriculum that is directly connected to social issues (needs).

### Animal hygiene and public health specialists

Specialists in the fields of animal hygiene and public health with the ability to respond quickly to domestic animal infectious diseases, such as avian influenza and foot-and-mouth disease, and food safety issues, as well as taking a regional leading role (prefecture and municipalities)

### One Health specialists

Specialists with advanced expertise, leadership, and communication skills to meet international issues relating to infectious disease control of humans, animals, and the environment, such as zoonosis and drug-resistant bacteria

### Treatment of intractable diseases and drug discovery specialists

Clinical veterinarians who can contribute to local communities as leaders in advanced medical centers such as intractable disease treatment, and researchers and educators who are responsible for the development of technologies and drug discovery to clinically apply the results of basic research to clinical practice

## Research and Development Promotion Center for Veterinary Science Education

We have established the Research and Development Promotion Center for Veterinary Science Education for the realization of a smooth collaborative system between universities regarding the Graduate School education, aiming to promote Graduate School education and collaborative education with external affiliated organizations, and to develop a connection between the undergraduate stage and Graduate School education related to veterinary medicine.

## Gifu University and Tottori University Joint Graduate School of Veterinary Sciences

### Course structure

#### Basic Veterinary Science Course

Advanced basic veterinary science research on veterinary and animal science

#### Pathology/Applied Veterinary Science Course

Research on basic disease research and advanced applied veterinary science regarding control

#### Clinical Veterinary Science Course

Advanced animal clinical medical research in companion and industrial animals

## Specialist education

Animal hygiene  
Public health  
Local veterinary affairs  
⋮

Transboundary infection  
Emerging and re-emerging infectious diseases  
Zoonosis  
Ecosystem conservation  
International veterinary affairs  
⋮

Treatment of intractable diseases  
New drug discovery  
Advanced veterinary medicine  
Regenerative medicine  
Elderly diseases  
⋮

### Animal hygiene and public health specialists



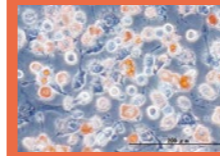
- Regional leaders (prefectures and municipalities)
- Domestic animal infectious disease control researchers/educators

### One Health specialists



- International contributions and human resources (OIE, WHO, government agencies, etc.)
- Zoonosis control researchers/educators

### Treatment of intractable diseases and drug discovery specialists



- Translational researchers (drug discovery etc.)
- Advanced veterinary medicine researchers/educators

